



## Attendance Policy

Reviewed on	2025/26, Term 1	Review frequency	Annual
Next review due	2026/27, Term 1	Template Yes / No	Yes (adapted for school context by Nell Giles)
Owner	Dir of Education, Secondary	Approved by	Board of Trustees



## History of Policy Changes

Date	Page	Change	Origin of Change
Sep 25	All	References to Governing Body changed to Local Governing Committee (LGC)	Annual review
	All	References to Headteacher changed to School Leader	
	Item 1, Introduction	Addition of para in relation to 'Good Punctuality'	
	Item 5, sub para 'Responsibilities of School and Staff' – School	2 <sup>nd</sup> and 3 <sup>rd</sup> bullets added	
	Item 5, sub para 'Responsibilities of School and Staff' – Parents/Carers <b>and Pupils</b>	Bullet points related to Pupils added	
	Para 8	% attendance targets aligned with HET Graduated Response	

1. Introduction .....	4
2. Key Information.....	4
3. Scope.....	5
4. Definitions .....	5
5. Responsibilities .....	5
Responsibilities of the school and staff.....	6
Responsibilities of LGC and HET.....	6
Responsibilities of Parents/Carers and Pupils.....	6
Responsibilities of Local Authority.....	7
6. Information for Parents.....	7
7. School Strategies to Improve and Support Attendance.....	7
8. Interventions for Poor and Declining Attendance.....	8
9. Absence Due to Illness.....	9
10. Medical Conditions .....	9
11. Request for Leave of Absence.....	10
12. Religious Observance .....	11
13. Welcome Back.....	11
14. Penalty Notices .....	11
15. Further Information .....	12
Process for Leavers.....	12



Absence through competing at regional, county or national level in sport..... 13

Service Families..... 13

Gypsy Roma and Traveller families..... 13

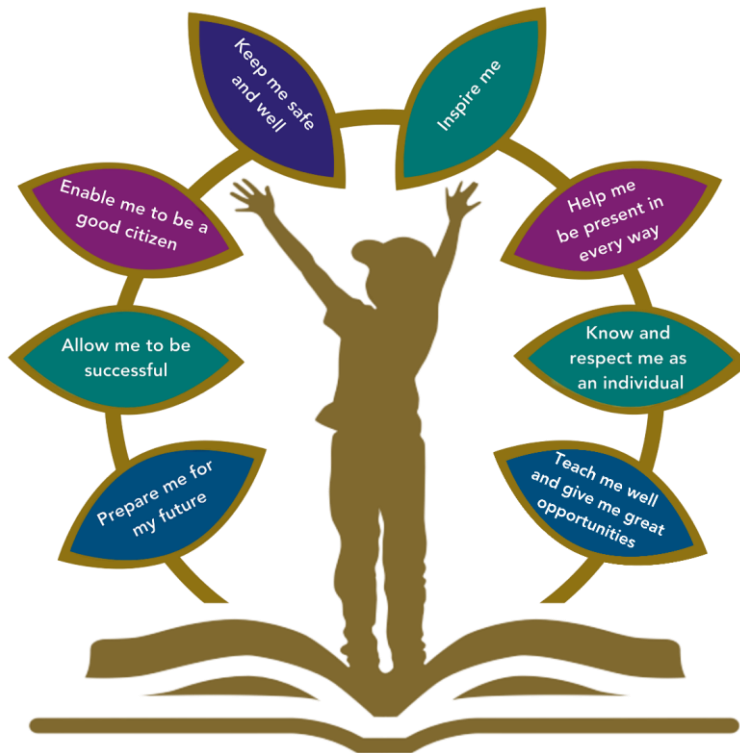
16. Link to Other HET Policies ..... 13

17. Monitoring & Review ..... 13

18. Appendix 1 – Coding Guidance ..... 14

19. Appendix 2 - HET Attendance Fundamentals..... 16

20. Appendix 3 –SHS Graduated Response to Supporting and Improving Attendance:..... 16



## Sam's Entitlement



## 1. Introduction

Hamwic Education Trust (HET) believe that all pupils should receive a high quality, enriching, learning experience in a safe and inclusive environment, which promotes excellence through a broad curriculum that prepares them for their future and opens doors to a diverse array of opportunities as well as that all pupils and adults within HET flourish as individuals and together.

This policy sets out that we recognise that good attendance (above 96%) and good punctuality is key to good pupil outcomes.

The links between regular attendance, good punctuality and reaching potential attainment and future life opportunities are well researched. For this reason, the school will encourage good attendance and punctuality be robust in monitoring attendance and punctuality data and take action when this falls below the expected level. Good attendance impacts significantly on progress, learning, friendship groups and the child's overall happiness at school.

### Good attendance is important because:

- regular attenders make better progress both socially and academically
- regular attenders find school routines, schoolwork and friendships easier to cope with
- regular attenders find learning more satisfying
- statistics show a direct link between under-achievement and absence below 95%
- regular attenders are more successful in transferring between primary school, secondary school and higher education and training.

### Good punctuality is important because:

- lateness can mean lost learning time and gaps in knowledge and understanding
- habits of lateness can be formed and continued in later life
- pupils can feel anxious and embarrassed walking into class late.

We understand that there are many reasons why children may be absent or late for school. Please speak to staff about ways that we can support you with this.

## 2. Key Information

Attendance Champion	<b>Nell Giles</b>
Attendance Officers	<b>Toni Graves</b>
School opens	<b>9.00am (BH)</b>
Registration begins	<b>9.00am (BH)</b>
Present mark given until	<b>9.20am (BH)</b>
Late mark given between	<b>9.20-9.30am (BH)</b>
U code, un-authorized absence, applied after	<b>9.30am (BH)</b>
School closes	<b>3.30pm (BH)</b>
How to report your child absent:	
<b>First Day Absence</b> A child not attending school is considered a <b>safeguarding</b> matter. This is why	Contact the school office or your child's teacher as soon as possible on the first day of absence by 9am where possible. If contact is not made by the parent/carer, then the school will phone, email and/or text the contacts



information about the cause of any absence is always required.	listed for the child to endeavour to make contact. This includes contacting main registered schools for children who are dual or guest registered. If we are unable to make contact or ascertain sufficient reason for absence, a member of staff may make a home visit. Records of the above will be made available to social care in the event of any Missing in Education investigation.
If your child is absent, we will:	Telephone on the first day of absence if we have not heard from you; this is because we have a duty to ensure your child's safety as well as their regular school attendance. If we are unable to reach you and do not hear from you after 1 hour of the intended lesson start time, your child's absence will be recorded as unauthorised, and we will: <ul style="list-style-type: none"> <li>• Invite you into the school to discuss the situation with Mrs Giles if absences persist.</li> <li>• Follow all DfE guidance and our graduated response if absence is unauthorised and attendance falls below 90%.</li> </ul>
How to report your child absent:	
<b>Third Day Absence</b>	Please note after three days of absence, if your child is not seen and contact has not been established with any of the named parents/carers, the school is required to start child absent from education procedures as per the DfE guidance <a href="#">DfE Child Missing Education Guidelines</a> . We will make all reasonable enquiries to establish contact with parents/carers and the child, including making enquiries to known friends and/or wider family.

### 3. Scope

This policy is for all pupils on dual or guest roll at the Southampton Hospital School.

### 4. Definitions

- HR' in this policy, means Hamwic Education Trust HR.
- 'Local Governing Committee' in this policy, where reference is made to the Governing Committee, this means the Local Governing Committee of the school, or the Trust in the case of a school where no Local Governing Committee is present. Where a Governing Committee is not present in a school, or numbers are low, Governors from other schools/partnerships may be used.
- 'Manager' in this policy, is anyone as identified in the staffing structure with line management responsibilities.

### 5. Responsibilities



### **Responsibilities of the school and staff**

#### **School will:**

- Promote and reward good and improving attendance with pupils at all appropriate opportunities.
- Have a dedicated member of the senior leadership team who will have the role of Senior Attendance Champion responsible for improving attendance and punctuality. They are expected to set a clear vision for improving and maintaining good attendance, establish and maintain effective systems for tackling absence and make sure they are followed by all staff and have a strong grasp of absence data to focus the collective efforts of the school. They are responsible for liaising with HET in regard to whole school attendance, severe absence and complex cases.
- Follow the Hamwic Education Trust's attendance fundamental offer set out in Appendix 2.
- Accurately complete admission and attendance registers.
- Have robust daily processes to follow up absence.
- Regularly monitor data to identify patterns and trends and understand which pupils and pupil cohorts to focus on.
- Liaise with the attendance parents/carers on matters of attendance and punctuality.
- Communicate any concerns or underlying problems that may account for a child's absence.
- Warmly welcome and support pupils to reengage with learning on their return.
- Work with pupils and their parents to understand and address the reasons for absence, including any in-school barriers to attendance.
- Where out of school barriers are identified, signpost and support access to any required services in the first instance and act as lead practitioner if attendance is the only issue and/or the local threshold for formal early help is not met.
- If the absence persists, take an active part in the multi-agency effort with the local authority and other partners. If a case meets the local threshold for formal early help/family support, this includes conducting the early help assessment and acting as the lead practitioner where all partners agree that the school is the best placed lead service.
- Where absence becomes persistent, put additional targeted support in place to remove any barriers. Where necessary this includes working with partners.
- Where there is a lack of engagement, hold more formal conversations with parents and be clear about the potential need for legal intervention in future.
- Where support is not working, being engaged with or appropriate, work with the local authority on legal intervention.
- Where there are safeguarding concerns, intensify support through a referral to statutory children's social care.
- Support the HET attendance Fundamentals: see Appendix 2
- Observe and fulfil the responsibilities set out in guidance issued by the Department for Education ([Summary table of responsibilities for school attendance \(applies from 19 August 2024\)](#) ([publishing.service.gov.uk](#)) to the extent not covered above or elsewhere in this policy.

**Commented [JP1]:** Should we make reference to the responsibilities of our designated Senior Leader who is the Attendance Champion

**Commented [RS2R1]:** Yes as we want to raise that role

**Commented [RD3R1]:** How about this?

**Commented [JP4]:** Maybe we should also add this?

### **Responsibilities of LGC and HET**

Governors will regularly review attendance data and help School Leaders focus support on the pupils who need it. Attendance data is shared with Trustees x6 times per year.

### **Responsibilities of Parents/Carers and Pupils**

Ensuring your child's regular attendance at school is a parent/carer's legal responsibility (Section 444 of the 1996 Education Act) and permitting absence from school that is not authorised by the school



creates an offence in law.

**Parents/Carers will:**

- Inform the school on the first day of absence
- Discuss with the class teacher or attendance staff any planned absences
- Discuss with the class teacher or attendance staff if they need any support to help their child to attend.
- Support the school with their aim to improve attendance
- Make sure that any absence is clearly accounted for by telephone call, email or text on the first day and subsequent days of absence
- Avoid taking their children out of school for non-urgent medical or dental appointments.
- Only request leave of absence in very exceptional circumstances.

**Pupils will:**

- Attend every day that they are able
- Attend school on time
- Attend ready to learn

**Responsibilities of Local Authority**

**Local Authorities will:**

- Have a strategy to improve attendance for their whole area.
- Have an Attendance Support Team to work with all schools in the area.
- Provide a named point of contact. Provide opportunities for sharing effective practice.
- Hold termly conversations with every school around attendance.
- Work jointly with schools and relevant agencies to facilitate support for families and remove barriers to attendance particularly for those pupils who are missing out on education.

**6. Information for Parents**

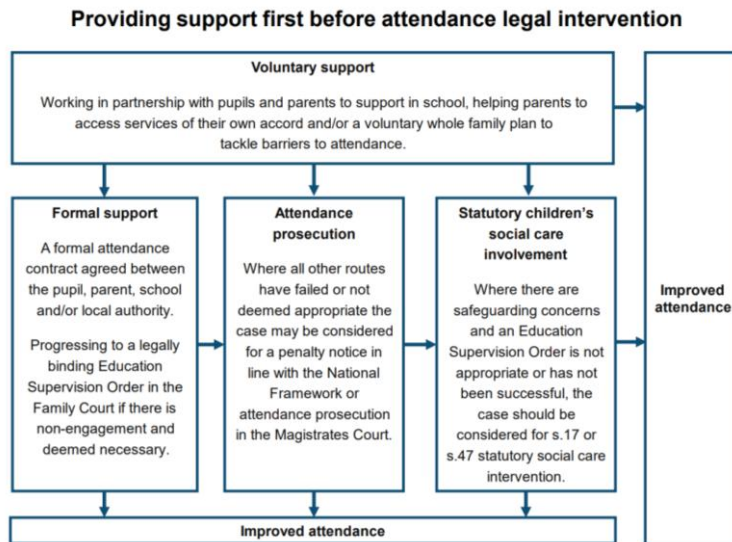
*Good and Improving Attendance*

We will recognise the effort that families make to get pupils into school each day by rewarding good and improving attendance at every opportunity. SHS will also keep home schools fully informed as to children's attendance and whether there are concerns or improvements being observed. We encourage home schools to celebrate successes and improvements with children, SHS will recognise improving attendance through headteacher commendations, postcards home and other rewards such as gift vouchers where appropriate.

**7. School Strategies to Improve and Support Attendance**

The school will follow the DfE guidance below outlined in [Working together to improve school attendance \(applies from 19 August 2024\) \(publishing.service.gov.uk\)](#)





## 8. Interventions for Poor and Declining Attendance

The school will use data to target attendance improvement efforts to the pupils or groups of pupils who need it most. In doing so, the School, led by the Senior Attendance Champion, will:

- Monitor and analyse weekly attendance patterns, proactively using data to identify pupils at risk of poor attendance.
- Regularly reference DfE VYED data and reports.
- Provide regular attendance reports to class teachers and relevant leaders in both SHS and home schools.
- Identify pupils who need support from wider partners, as soon as possible, and deliver this support in a targeted manner.
- Conduct thorough analysis of half-termly, termly and full-year data to identify patterns and trends.
- Benchmark school attendance data at each level against local, regional and national level.
- Monitor the impact of school strategies and actions to improve attendance on particular pupils and particular groups.
- Work with the local authority and other local partners to identify groups in need of support.
- Hold regular meetings with the parents or carers of pupils who the school and/or local authority consider to be vulnerable

Where absence or punctuality is a cause for concern, for example because there is:

- a pattern of unauthorised absence;
- a question over the reasons provided for a particular absence or late arrival;
- persistent truancy or lateness;
- we will make contact with the home schools, commissioning authority, parents/carers with a view to working together to support improved attendance and/or punctuality. This may take place through the multiagency medical needs panel chaired by Southampton Education Support Team.



In cases where the school has been unable to establish a clear reason for absence and/or has welfare concerns about the pupil a home welfare check may be carried out.

The school will follow a graduated response which is detailed at the end of this policy.

### 9. Absence Due to Illness

It is recognised that children can become ill and may occasionally need to have time off school. If the school feel that the pupil may need further support with maintaining good health or there are concerns around the number of times the pupil is ill, school may request parents to provide medical evidence to support the family and school in implementing the most effective support.

Letters and recommendations from medical professionals will be considered on a case-by-case basis but will not automatically be seen as a reason to authorise an absence.

Absences due to parents/carers health or medical procedures will not be authorised as standard. If your child is unwell and you are unsure of whether to send them in to school a useful site to check is <https://www.nhs.uk/live-well/healthy-body/is-my-child-too-ill-for-school/>

The school may be able to administer some over the counter medications with parental consent, to help your child manage minor illness when in school. This will be decided on a case-by-case basis.

### 10. Medical Conditions

Our pupils face greater barriers to attendance than their peers due to the fact that they are suffering from long term medical conditions and/or have special educational needs and disabilities. Their right to an education is the same as any other pupil and therefore the attendance ambition for these pupils is the same as for any other pupil. However, due to the high level of need of many of our pupils, we remain mindful of the barriers these pupils face and put additional support in place where necessary to help them access education during their hospital admission or referral to our outreach service. We understand that good school attendance is a protective factor for many vulnerable pupils and so we aim to support and build attendance both with us and back within their own schools.

One of our aims is to support children back into school as soon as their health allows because we know that this is best for the child. We aim to help ensure that the reintegration process encourages maximum attendance is resumed as quickly as possible. This includes working with families, home schools and external agencies, ensuring that they understand how important regular attendance is to their child's development and health. We will support routines where school transport is regularly being missed and work with other partners to encourage the scheduling of additional support interventions or medical appointments outside of the main school day.

It is crucial that our schools receive and fully consider advice from healthcare professionals and listen to and value the views of parents and pupils. We understand that some children with medical conditions may be considered to be disabled under the definition set out in the Equality Act 2010. Some pupils may also have special educational needs (SEN) or Education, Health and Care (EHC) plan which brings together health and social care needs, as well as their special educational provision. We will ensure that staff are properly trained to provide the support that pupils need, their healthcare plan is closely monitored and implement an Individual Healthcare plan if needed. It is at the discretion of the School Leader if they accept a pupil in school if it is judged that the attendance of



that pupil maybe at the detriment to their own health or the health of other pupils. The School Leader may seek medical advice where necessary.

## All pupils

- We aspire to high standards of attendance from all pupils and parents, and build a culture where all can, and want to, be in school and ready to learn. We monitor and record attendance through the completion of admission and attendance registers and use data to identify patterns of poor attendance at individual and cohort level to ensure that everyone is working together to identify barriers and resolve issues.

## Inpatients

- We work closely with pupils, parents, medical professionals within the hospital and relevant external agencies to encourage full time attendance either at bedside or in one of our classrooms. Where part time timetables are necessary to allow for health needs, we will always treat this as temporary and increase the education offer as quickly as we can whilst remaining sensitive to their individual needs. We will work closely with pupils' home schools prior to discharge, to ensure attendance continues. This can include contributing to reintegration plans and the writing of IHCPs.

## Outreach

- Our outreach pupils all carry a history of low attendance at their own schools, due to their medical condition. We work closely with the Education Support Team and other external agencies around the child to promote regular attendance both with our teachers and with their own schools through carefully planned reintegration programmes.

### 11. Request for Leave of Absence

**The DfE states: 'Head teachers should only authorise leave of absence in exceptional circumstances. If a head teacher grants a leave request, it will be for the head teacher to determine the length of time that the child can be away from school. Leave is unlikely, however, to be granted for the purposes of a family holiday as a norm.'**

School Leaders may not grant any leave of absence during term time unless there are **exceptional** circumstances only and this is not the norm. It is important to note that School Leaders can determine the length of the authorised absence as well as whether the absence is authorised at all. The fundamental principles for defining 'exceptional' are rare, significant, or unavoidable circumstances (which means the event could not reasonably be scheduled at another time). Circumstances will vary from family to family.

There is no legal entitlement for time off in school time to go on holiday and, in the vast majority of cases, holiday will not be authorised.

Parents/Carers wishing to apply for a leave of absence need to fill in an application form (available on request from the school office) in advance and before making any travel arrangements. If term time leave is taken without prior permission from the school, the absence will automatically be



unauthorised and if the number of sessions absent exceeds 10 sessions, the school may request the Local Authority to consider issuing a fine or a warning letter.

Taking holidays in term time will affect your child's schooling as much as any other absence and as such, we expect parents to help us by not arranging holidays during school time. Unauthorised absence of more than 10 sessions (a session being one morning or afternoon) in a ten-week period can be issued with a penalty notice.

School work for pupils that are absent will only be provided during exclusions or long-term medical absences and not during unauthorised absences.

## 12. Religious Observance

We recognise that pupils of certain faiths may need to participate in days of religious observance. Where a day of religious observance:

- falls during school time and
- has been exclusively set apart for religious observance by the religious body to which the pupil belongs.

The absence will be authorised. We ask that the parents/carers notify the school in advance

## 13. Welcome Back

On returning from absence, all pupils are made to feel welcome, helped to catch up on missed work and brought up to date with any information that has been passed to the other pupils.

## 14. Penalty Notices

SHS does not issue penalty notices. This is managed by pupils' home schools.

## How We Can Support Our Children to Attend

### My child is trying to avoid coming to School. What should I do?

Children are sometimes reluctant to attend school. Any problems with regular attendance are best dealt with between the school, the parents and the child.

If a child is reluctant to attend, it is never better to enable them to stay away from school. This may give the impression that attendance does not matter and may make things worse.

Please do contact your child's class teacher, pastoral worker or attendance staff as soon as possible to openly discuss your worries. Your child could be avoiding school for a number of reasons such as difficulties with schoolwork, friendship problems, family difficulties, special educational needs or bullying issues. It is important that we communicate effectively to identify the reason for your child's reluctance to attend school and work together to tackle the problem.



In some cases, you may find it helpful to discuss the circumstances of your child's difficulties with another professional and we may be able to make referrals or signpost you towards further assistance.

#### **What can parents do to encourage their child to attend school?**

- Make sure your child gets enough sleep and gets up in plenty of time each morning.
- Ensure that they leave home in the correct clothes and are properly equipped. (contact the school if you require assistance with this)
- Show your child, by your interest, that you value their education.
- Be interested in what your child is doing in school, chat to them about the things they have learnt, their progress towards rewards, their friendships, and even what they had for lunch!
- Speak positively about school at home.

For many parents, a child starting school may be their / your first experience of being separated from them. This can seem daunting at first but thinking and speaking of it as a new and exciting adventure will help you both. The transition into a settled and happy school life also depends on routine and regular, punctual attendance can help as much as any other intervention.

#### **Record Preservation**

School registers are legal documents. We will ensure compliance with attendance regulations by keeping attendance records for at least 3 years. Computer registers will be preserved as electronic back-ups.

#### **Criteria for success**

- Improved attendance percentage for persistent absentees (**10% or higher of their possible sessions missed**)
- Improved attendance data across all years.
- Attendance rate increases
- Authorised absence rate decreases
- Unauthorised absence and persistent absence rate decreases
- Improvement in individuals' attendance
- The profile of good attendance within the school community is raised

### **15. Further Information**

#### ***Process for Leavers***

If your child is leaving our school and returning to their home school, we ask that parents notify the school. In addition we will contact all schools when discharging pupils from our register to ensure all parties are fully aware. If we become aware and concerned that a child has not returned to school following discharge, we will contact the school and the relevant Children's Services. We will assist schools, Local Children's Services, the Police and other agencies Authorities in carrying out investigations to try and locate your child. If your child is Electively Home Educated, we will inform the relevant Local Authority of the discharge.

#### **Possible Exceptions to Unauthorised Absence**



The School Leader will consider the **impact on learning**, the **frequency of absence**, and whether **educational provision** is in place during the absence.

#### **Absence through child participation in public performances, including theatre, film or TV Work and modelling**

Parents/carers of a child performer can seek leave of absence from school for their child to take part in a performance. They must contact the School Leader to discuss the nature and frequency of the work, whether the child has a valid performance licence and whether education will be provided by the employer during any future leave of absence. Any absence approved by the School Leader as being part of a child's participation in a public performance is recorded as an authorised absence.

#### ***Absence through competing at regional, county or national level in sport.***

Parents/carers of able sportsmen and women can seek leave of absence from school for their child to take part in a regional, county, national and international events and competitions. It is however, down to the School Leader's discretion whether to authorise this. They will wish to discuss with you the nature and frequency of the absence and how learning will continue if absence occurs. Permission for your child to leave early or arrive late to attend coaching and training sessions are also at the discretion of the School Leader and are not likely to be approved if it is a regular event, unless the sports club or association are providing an education tutor as part of their coaching.

#### ***Service Families***

The Ministry of Defence (MoD) issue additional guidance to schools with regards to term time absences for the children of service families. This is provided because it is acknowledged that the operational needs of the Armed Forces may legitimately prevent a service family from taking holidays within the school holidays. Ultimately the decision on whether to authorise leave in term time still lies with the School Leader, however further clarification regarding the exact circumstances may be sought from Unit Commanding Officers and their welfare staff. When deciding whether to authorise an application for a leave of absence from a service family, the School Leader will take into account the circumstances, the child's attendance record and the school year which the child is in.

#### ***Gypsy Roma and Traveller families***

Absence of a child from a traveller family that has left the area may be authorised if the absence is for work purposes only and it is believed that the family intends to return. To ensure the continuity of learning for traveller children, dual registration is allowed. That means that a school cannot remove a traveller child from the school roll while they are travelling. When the traveller is away the home school holds the place open and records the absence as authorised through the T code. Distance Learning packs for traveller children are not an alternative to attendance at school.

#### **16. Link to Other HET Policies**

- Safeguarding and Child Protection Policy
- Children with Medical Conditions who Cannot Attend school policy:

#### **17. Monitoring & Review**



"This policy will be reviewed annually by the HET Attendance Officer and the application will be monitored by the school's attendance champion Nell Giles (headteacher)

## 18. Appendix 1 – Coding Guidance

### Coding Guidance

Summary of the UK school attendance and absence codes along with their meanings and categories, based on the latest guidance effective from August 2024 found here: [Working together to improve school attendance](#)

Code	Meaning	Category
/	Present at morning session	Present
\	Present at afternoon session	Present
L	Late (before register closes)	Present
B	Attending any other approved educational activity	Approved Educational Activity
D	Dual registered (attending another school)	Approved Educational Activity
K	Attending alternative provision arranged by the LA	Approved Educational Activity
P	Participating in a supervised sporting activity	Approved Educational Activity
V	Educational visit or trip	Approved Educational Activity
J1	Interview (e.g. for a job or college)	Authorised Absence
C	Leave of absence for exceptional circumstance	Authorised Absence
C1	Leave of absence for the purpose of participating in a regulated performance or undertaking employment abroad.	Authorised Absence
C2	Leave of absence for a compulsory school age pupil subject to a part-time timetable	Authorised Absence
E	Excluded but not attending alternative provision	Authorised Absence
I	Illness (not medical/dental appointments)	Authorised Absence
M	Medical/dental appointments	Authorised Absence
R	Religious observance	Authorised Absence
S	Study leave	Authorised Absence
T	Traveller absence	Authorised Absence
G	Family holiday (not agreed or unauthorised)	Unauthorised Absence
N	Reason for absence not yet provided	Unauthorised Absence
O	Absent without authorisation	Unauthorised Absence
U	Late (after register closed)	Unauthorised Absence
X	Not required to be in school (e.g. non-compulsory age, COVID-related)	Not counted in attendance calculations
Y1	Transport normally provided not being available	Not counted in attendance calculations
Y2	Widespread disruption to travel	Not counted in attendance calculations
Y3	School premises partially closed	Not counted in attendance calculations

Commented [JP5]: Should we also add a link to the document so that parents always have access to the most up to date coding.

Commented [RS6R5]: It's referenced above



Y4	Whole school site being unexpectedly closed	Not counted in attendance calculations
Y5	Pupil is in criminal justice detention	Not counted in attendance calculations
Y6	Unable to attend in accordance with public health guidance or law	Not counted in attendance calculations
Y7	Unable to attend because of any other unavoidable cause	Not counted in attendance calculations
Z	Pupil not yet on roll	Not counted in attendance calculations
#	School closed to pupils	Not counted in attendance calculations
Q	Unable to attend school because of lack of access arrangements	Attendance not required



## 19. Appendix 2 - [HET Attendance Fundamentals](#)

## 20. Appendix 3 –SHS Graduated Response to Supporting and Improving Attendance:

### Universal support: all pupils

- ✓ On admission or referral, adults quickly establish warm relationships with children and parents
- ✓ Teachers and leaders work closely with the medical teams or referring schools to gain information, including health status and attendance histories, to enable timetables and curriculum offers to be quickly and effectively tailored
- ✓ Children are welcomed every session to ensure they feel known and valued
- ✓ The classrooms provide a safe physical and emotional space for learning
- ✓ Where children are unable to access classrooms, the teaching is taken to bedside or to children's homes and safe spaces
- ✓ Strong relationships and open communication are formed with parents
- ✓ Incentives and rewards are given for attending the classroom or engaging with learning
- ✓ The Attendance Officer will scrutinise attendance data weekly to look for patterns, trends, and concerns. This information will be shared with the Headteacher.

### Early Intervention Support: Pupils who display initial reluctance to attend

#### Inpatients:

- ✓ If children are initially reluctant to access teaching in the hospital, teachers will return regularly with incentives (games, rewards etc) to encourage attendance. Teachers will also work alongside hospital staff (OT, SALT, Play Specialists) to create learning conditions that enable children to feel happy and comfortable
- ✓ Timetables will be created to ensure medical needs and planned procedures are taken fully into account (e.g. poor sleep patterns, pain, medication side effects, regular medical and therapeutic interventions). Medical professionals and parents will always be consulted.
- ✓ Lesson times will be altered and amended as necessary to allow for the maximum number of teaching hours to be achieved
- ✓ ELSA and TIS Practitioner support
- ✓ Teachers will exercise professional curiosity at all times and share all relevant information as necessary to ensure the safety and wellbeing of the child. This will be in accordance with the SHS Safeguarding and Child Protection Policy.

#### Outreach:

- ✓ If children at home are initially reluctant to engage with teaching sessions, teachers will continue to arrive at the agreed times, unless a health or social care professional advises that this is not in the child's best interests
- ✓ Teachers will exercise professional curiosity at all times and share all relevant information as necessary to ensure the safety and wellbeing of the child. This will be in accordance with the SHS Safeguarding and Child Protection Policy.
- ✓ Lesson times and durations may be altered and amended as necessary to allow for the maximum number of teaching hours to be achieved



- ✓ A graduated exposure plan will be created in agreement with the pupil, their family, school and any relevant external services
- ✓ A change in teaching environment will be considered to encourage attendance and engagement
- ✓ Temporary offer of remote or blended learning
- ✓ Providing social stories
- ✓ ELSA and TIS Practitioner support

**Targeted additional support: pupils who continue not to attend or whose attendance with SHS falls or remains irregular during admission**

**Inpatients:**

- ✓ Liaising closely with children's schools to share information pertaining to possible barriers to attendance
- ✓ SENDCO led assessment to identify any previously unidentified educational needs that might be negatively affecting attendance and engagement
- ✓ Teachers will invite parents into teaching spaces alongside their child for early teaching sessions
- ✓ Liaison with the medical team around the child to discuss attendance and formulate plans to encourage and support young people and their families
- ✓ Teaching staff and leaders attend MDT meetings and ward rounds to discuss strategies to increase attendance
- ✓ Inviting parents to meet with teaching staff to identify barriers and encourage attendance
- ✓ Inviting trusted adults from pupils' own schools to visit pupils and support them in the learning environment

**Outreach:**

- ✓ Liaising closely with children's schools to share information pertaining to possible barriers to attendance, previous patterns of attendance, previous school safeguarding concerns etc
- ✓ SENDCO led assessment to identify any previously unidentified educational needs that might be negatively affecting attendance and engagement
- ✓ Concerns shared with Educational Support and/or SEND Services and a plan agreed

**Targeted intensive additional support: pupils who do not attend**

**Outreach:**

- ✓ Continue to liaise closely with children's schools to share information pertaining to possible barriers to attendance, previous patterns of attendance, previous school safeguarding concerns etc.
- ✓ SENDCO led assessment to identify any previously unidentified educational needs that might be negatively affecting attendance and engagement
- ✓ Concerns shared with Educational Support and/or SEND Services and a plan agreed
- ✓ Referral to Child Missing Education Services

*All about the child*



